

## General features

### Insulation

Insulation ref. voltage: 660V  
 Test voltage: 2kV/1min at 50Hz

### Housings

Material: Self extinguishing thermoplastic material UL94  
 Protection housing: IP52 (CEI 70-1, IEC 529)  
 terminals : IP00 (CEI 70-1, IEC 529)  
 Dimensions: According to DIN standard 43700/43718 and UNEL 05511

### Temperatures

Reference temperature: 23°C  
 Limit range of temp.: -25..+50°C  
 Humidity: Relative humidity of ambient 85% without condensing with temperature of 35°C for max. 60 days a year. Yearly average humidity must not be higher than 65% (DIN 40040).

Variation to the class index:  $\pm 0,03\%$  / °C  
 Limit range of temperature for storage: -40..80°C.

### Vibration

Norms: CEI 50-6, IEC 68-2-6  
 Amplitude: 1-0,03mm  
 Frequency: 5-80Hz'

### Influence of external magnetic fields

External magnetic fields up to 0,5 mT do not cause errors outside the specifications standard.

### Reference standards

Directive: 89/336/EEC, 92/31/CEE  
 Electrical features: CENELEC HD233, CEI85-3, IEC51, VDE0410, BS89, C42-100  
 Security standards: CENELEC HD215, CEI 13-10 IEC 13-10, IEC 414, DIN 57410 BS5458, C42-010

## Special options on request

### Housings, other

- Protection IP54.
- Protection IP40 on terminals.
- Unbreakable front frame for models RQ48-72-96-144
- Adjustable red reference pointer
- Silicon protected zero adjustment screw
- Tropicalization for saline-humid-heat ambient working temperature of 35°C for max. 30 days a year average, relative humidity 75%, storage temperature -40..+80°C.

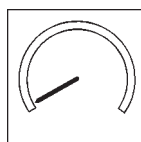
### Measure system

- Accuracy 1%, calibration in class 1
- Heavy damped pointer
- Modification to other ranges
- Vibrationproof execution: amplitude 2,5..035 mm pk, frequency 5..63Hz, acceleration 0,25..5,69g
- Instrument with anti-magnetic screen to be used in external magnetic fields higher than 0,5mT

### Scales

- Special scale with standard division.
- Red sector
- Coloured sector
- Double numbering, one scale.

Standard



White scale & sector  
 Black pointer, divisions & numbering

Option



Black scale & divisions  
 Yellow sector, pointer & numbering

Option



White scale & divisions  
 Black sector, pointer & numbering

Some examples of special scales with standard division.

